



SYNTHETIC THATCH

Product Lines



INSPIRED BY NATURE IMPROVED BY INNOVATION

The goal is to create a realm where people can be completely engaged in their fantasies of wilderness, what is natural seems to be the most critical element in terms of what is considered to be “original” from the wild.

OneThatch is here to bridge the dream and reality. With the value of being environment-friendly, we wield the most up-to-date technology of synthetic decoration in the world.

Our products are easy to install by any kind of architects, owners, and individuals who are looking to create these exotic environments on their property.



Class A
Fire Rated



Wind Rated



UV Stable



Recyclable



Waterproof



Maintenance
Free



ONETHATCH | PALM

The natural charm of natural thatch does not bring any inconvenience and cost.

Affordable, Independently Waterproof, No Sub Deck Required.

Molded in high-quality polyethylene from palm or nipa leaves, ONETHATCH shingles reproduce the rugged charm of natural thatching to the most delicate detail.



VARIATIONS



01. Fan

Designed to reproduce the rugged charm of natural fan palm leaf thatching to the most delicate detail.



02. Nipa

Designed to recreate the island beauty of nipa palm leaf thatching typically installed in Southeast Asia.



03. Raincape

Designed to mimic the traditional hand-woven rain cape thatching typically found in Mexican islands.



04. Hip & Ridge

The Hip & Ridge shingle is a versatile accessory that compatible with both palm, nipa, raincape style thatching.



05. Colors

ONETHATCH PALM is offered in three tones as standard: "Weathered", "Sundried" and "Aged".

No Sub Deck Necessary

The leaf texture pattern will be visible on the underside ceiling when installed on the open batten roof structure.

Fan

Designed to reproduce the rugged charm of natural fan palm leaf thatching to the most delicate detail.



Natural-looking

The bottom part of the shingles was cut at randomized lengths to create a more natural look when layered.

Nipa

Designed to recreate the island beauty of nipa palm leaf thatching typically installed in Southeast Asia.



Attention to Detail

We strive for excellence, quality and aesthetics
are never compromised.

Raincape

Designed to mimic the traditional hand-woven
rain cape thatching typically found in Mexican
islands.



VERSATILE MATERIAL FOR
ANY ROOF STRUCTURE



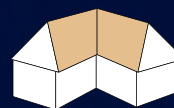
SHED



GABLE



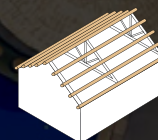
HIP



VALLEY



CONE



BATTEN



Class A
Fire Rated



Wind Rated



UV Stable



Recyclable



Free Of Pests



Maintenance
Free



ONETHATCH | REED

The natural charm of natural thatch does not bring any inconvenience and cost.

Durable, Authentic, Fire-Retardant.

Luxurious synthetic replicas that perfectly reproduce traditional hand-trimmed reed thatching beauty while preserving all the advantages of high-performing synthetic material.



VARIATIONS



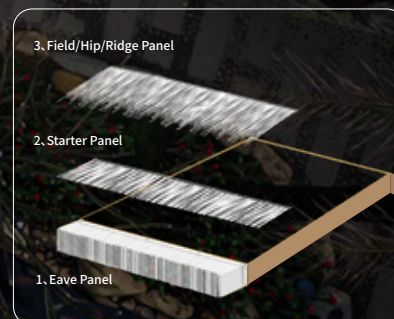
01. Tanzania



02. South Africa

Assembled from synthetic reed strands at varied colors & lengths. When layered, it gives a voluminous but well-trimmed appearance.

COMPLETE SOLUTION





PRODUCT FEATURES



Class A
Fire Rated



Wind Rated



Waterproof



UV Stable



Recyclable



Worry Free



Free Of Pests



Maintenance Free

Tested & Certified

ONETHATCH has been stringently tested by the international authorities to guarantee decades of worry-free beauty.

20-year warranty included against rot, decay, and sudden color fading.

ISO
9001
QUALITY
ASSURANCE

20
YEAR
WARRANTY

MADE
IN
CHINA

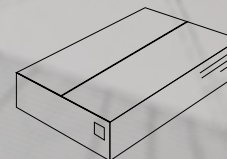
Mission

We are committed to providing attentive and responsive service from start to finish, at each stage of your thatching project



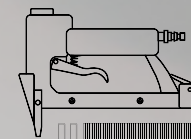
Proposal

- Product Data Sheet
- Roofing Structure Consultation
- Sample for Approval



Pre-commencement

- Determine Order Quantity
- Logistics Solutions
- Container Optimization



Construction

- Installation Training
- Spare Parts

CUSTOM THATCH BLENDS

If you have a specific look or dream thatching material, let us custom design and create it for you.

We design and manufacture all synthetic materials directly.

Only the best, no middlemen, request a free sample and see for yourself.

XIAMEN JINYANG INDUSTRIAL CO., LTD.



Website: onethatch.com

Address: 8 Fengling 2nd Rd, Tong'an District, Xiamen,
Fujian, China, 361100

Email: sales@onethatch.com

Email: info@jinyangindustry.com

Tel: +1-352-284-9958